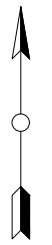


© CROWN COPYRIGHT. ALL RIGHTS RESERVED.
2025 LICENCE NUMBER AC000808122.

- KEY:
- DEVELOPMENT BOUNDARY (OUTSIDE OF LINE DENOTES BOUNDARY)
 - PALISADE, WELDMESH OR ACOUSTIC FENCE
 - BATTERY STORAGE ENCLOSURE (BSE)
 - POWER CONVERSION SYSTEM (PCS) WITH SINGLE MV SKID AND APRON SLAB
 - BESS SUBSTATION BUILDING
 - AUXILIARY TRANSFORMER
 - LV SWITCHGEAR ROOM
 - AGGREGATION PANEL WITH LV PILLAR
 - PRE-INSERTION RESISTOR
 - CAPACITOR BANK
 - HARMONIC FILTER AND RESISTOR
 - SPARES CONTAINER
 - LIGHTING / CCTV COLUMN
 - ACCESS TRACK
 - EXISTING ACCESS TRACK
 - EXISTING ACCESS TRACK TO BE UPGRADED
 - ALLOWANCE FOR EARTHWORKS (6m)
 - GRAVEL OR ASPHALT FINISH TO SUIT DETAILED EARTHING DESIGN
 - EXISTING DRAINAGE INFRASTRUCTURE
 - WATER CHANNEL CROSSING CULVERT

- NOTES:
- EQUIPMENT DETAILS AND CONFIGURATION WITHIN THE BATTERY ENERGY STORAGE COMPOUND ARE INDICATIVE AND SUBJECT TO DETAILED DESIGN.

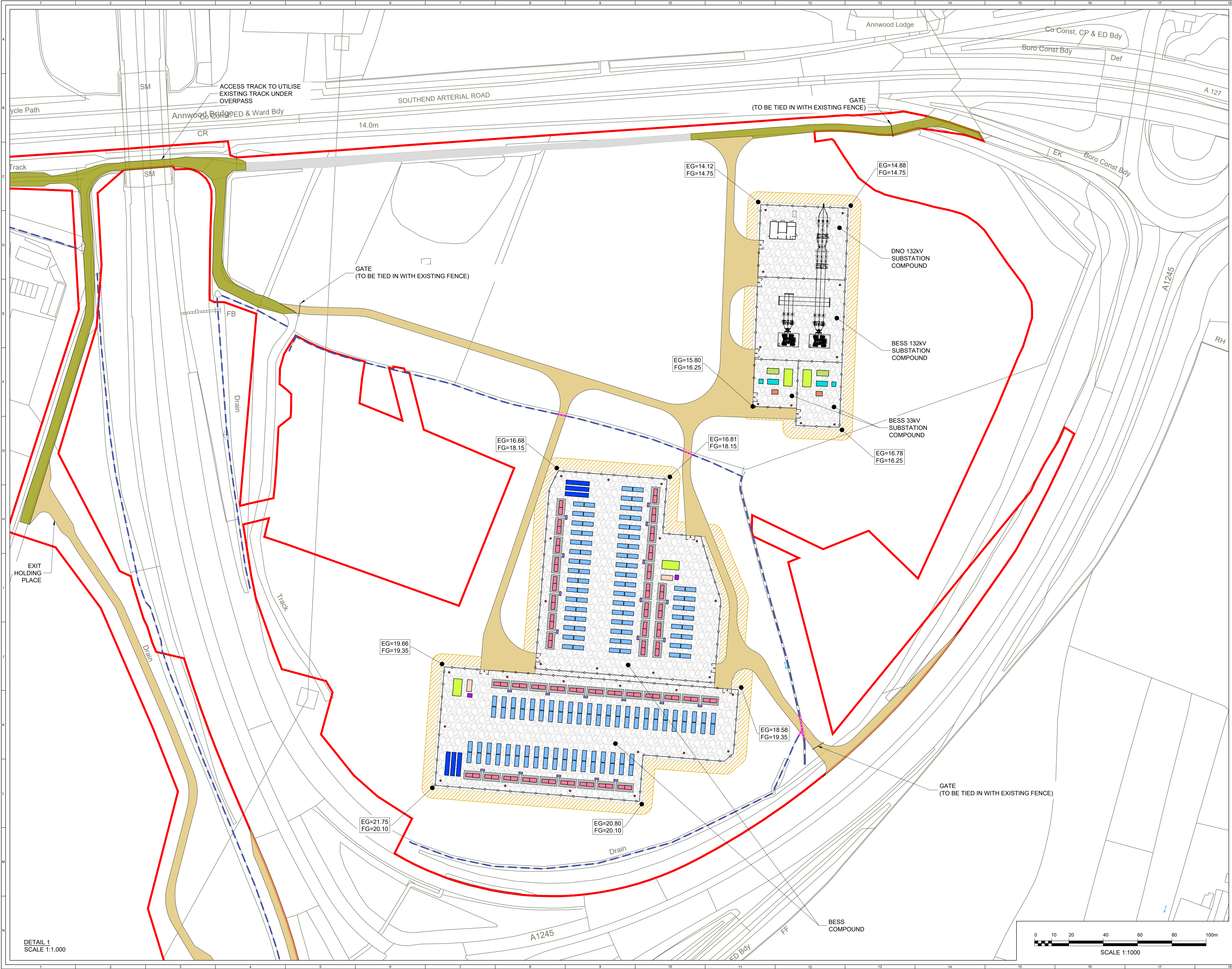
OVERALL
SHEET 1 OF 3



3	BM	WM	JH	2025-06-11	UPDATED DEVELOPMENT BOUNDARY AND ACCESS TRACK	
2	BM	WM	JH	2025-06-08	DESIGN EVOLUTION	
1	BM	MC	JH	2025-04-15	FIRST ISSUE	
ISSUE				CHKD	APPD	DATE
PURPOSE				COORDINATES		
DRAWING TITLE				OSGB 1936		
SCALE				DATUM		
1:2,000				@ A1		
LAYOUT DWG				T-LAYOUT NO.		
N/A				N/A		
PROJECT TITLE				FAIRGREEN STORAGE		
DRAWING TITLE						
INFRASTRUCTURE LAYOUT						
RES DRAWING NUMBER						REV
05560-RES-LAY-DR-PT-001						3
THIS DRAWING IS THE PROPERTY OF RENEWABLE ENERGY SYSTEMS LIMITED AND NO REPRODUCTION MAY BE MADE IN WHOLE OR IN PART WITHOUT PERMISSION						

BEAUFORT COURT,
EGG FARM LANE,
KINGS LANGLEY,
HERTS WD4 8LR, UK
TEL: +44 (0) 1923 296200
WWW.RES-GROUP.COM





© CROWN COPYRIGHT. ALL RIGHTS RESERVED.
2025 LICENCE NUMBER AC000808122.

KEY:

- DEVELOPMENT BOUNDARY (OUTSIDE OF LINE DENOTES BOUNDARY)
- PALISADE, WELDMESH OR ACOUSTIC FENCE
- BATTERY STORAGE ENCLOSURE (BSE)
- POWER CONVERSION SYSTEM (PCS) WITH SINGLE MV SKID AND APRON SLAB
- BESS SUBSTATION BUILDING
- AUXILIARY TRANSFORMER
- LV SWITCHGEAR ROOM
- AGGREGATION PANEL WITH LV PILLAR
- PRE-INSERTION RESISTOR
- CAPACITOR BANK
- HARMONIC FILTER AND RESISTOR
- SPARES CONTAINER
- LIGHTING / CCTV COLUMN
- ACCESS TRACK
- EXISTING ACCESS TRACK
- EXISTING ACCESS TRACK TO BE UPGRADED
- ALLOWANCE FOR EARTHWORKS (6m)
- GRAVEL OR ASPHALT FINISH TO SUIT DETAILED EARTHING DESIGN
- EXISTING DRAINAGE INFRASTRUCTURE
- WATER CHANNEL CROSSING CULVERT

NOTES:

- EQUIPMENT DETAILS AND CONFIGURATION WITHIN THE BATTERY ENERGY STORAGE COMPOUND ARE INDICATIVE AND SUBJECT TO DETAILED DESIGN.

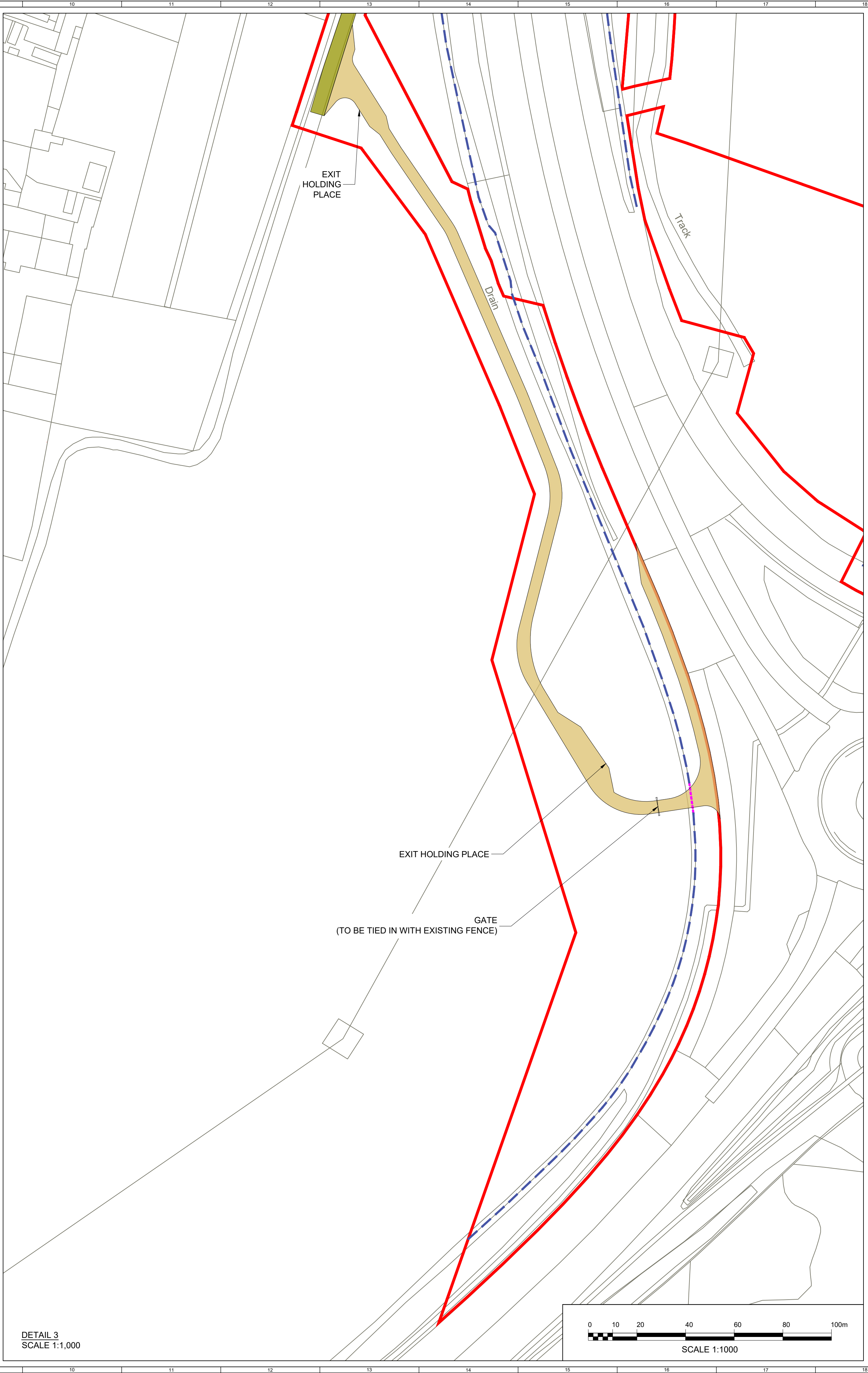
DETAIL 2
SHEET 2 OF 3

3	BM	WM	JH	2025-06-11	UPDATED DEVELOPMENT BOUNDARY AND ACCESS TRACK
2	BM	WM	JH	2025-06-08	DESIGN EVOLUTION
1	BM	MC	JH	2025-04-15	FIRST ISSUE
ISSUE	DRAWN	CHKD	APPD	DATE	REVISION NOTES
PURPOSE					COORDINATES
PLANNING				OSGB 1936	
SCALE		1:1,000 @ A1		DATUM N/A	
LAYOUT DWG		N/A		T-LAYOUT NO. N/A	
PROJECT TITLE FAIRGREEN STORAGE					
DRAWING TITLE INFRASTRUCTURE LAYOUT					
RES DRAWING NUMBER 05560-RES-LAY-DR-PT-001					REV 3
<small>THIS DRAWING IS THE PROPERTY OF RENEWABLE ENERGY SYSTEMS LIMITED AND NO REPRODUCTION MAY BE MADE IN WHOLE OR IN PART WITHOUT PERMISSION</small>					

SCALE 1:1000

BEAUFORT COURT,
EGG FARM LANE,
KINGS LANGLEY,
HERTS WD4 8LR, UK
TEL: +44 (0) 1923 290200
WWW.RES-GROUP.COM

DETAIL 1
SCALE 1:1,000

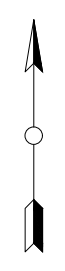



© CROWN COPYRIGHT. ALL RIGHTS RESERVED.
2025 LICENCE NUMBER AC0000808122.

- KEY:
- DEVELOPMENT BOUNDARY (OUTSIDE OF LINE DENOTES BOUNDARY)
 - PALISADE, WELDMESH OR ACOUSTIC FENCE
 - BATTERY STORAGE ENCLOSURE (BSE)
 - POWER CONVERSION SYSTEM (PCS) WITH SINGLE MV SKID AND APRON SLAB
 - BESS SUBSTATION BUILDING
 - AUXILIARY TRANSFORMER
 - LV SWITCHGEAR ROOM
 - AGGREGATION PANEL WITH LV PILLAR
 - PRE-INSERTION RESISTOR
 - CAPACITOR BANK
 - HARMONIC FILTER AND RESISTOR
 - SPARES CONTAINER
 - LIGHTING / CCTV COLUMN
 - ACCESS TRACK
 - EXISTING ACCESS TRACK
 - EXISTING ACCESS TRACK TO BE UPGRADED
 - ALLOWANCE FOR EARTHWORKS (6m)
 - GRAVEL OR ASPHALT FINISH TO SUIT DETAILED EARTHING DESIGN
 - EXISTING DRAINAGE INFRASTRUCTURE
 - WATER CHANNEL CROSSING CULVERT

- NOTES:
- EQUIPMENT DETAILS AND CONFIGURATION WITHIN THE BATTERY ENERGY STORAGE COMPOUND ARE INDICATIVE AND SUBJECT TO DETAILED DESIGN.

DETAIL 2 & 3
SHEET 3 OF 3



3	BM	WM	JH	2025-06-11	UPDATED DEVELOPMENT BOUNDARY AND ACCESS TRACK			
2	BM	WM	JH	2025-06-08	DESIGN EVOLUTION			
1	BM	MC	JH	2025-04-15	FIRST ISSUE			
ISSUE				DRAWN	CHKD	APPD	DATE	REVISION NOTES
PURPOSE				COORDINATES				
PLANNING				OSGB 1936				
SCALE		1:1,000		@ A1		DATUM		N/A
LAYOUT DWG		N/A				T-LAYOUT NO.		N/A
PROJECT TITLE				FAIRGREEN STORAGE				
DRAWING TITLE				INFRASTRUCTURE LAYOUT				
RES DRAWING NUMBER								REV
05560-RES-LAY-DR-PT-001								3
THIS DRAWING IS THE PROPERTY OF RENEWABLE ENERGY SYSTEMS LIMITED AND NO REPRODUCTION MAY BE MADE IN WHOLE OR IN PART WITHOUT PERMISSION								
				BEAUFORT COURT, EGG FARM LANE, KINGS LANGLEY, HERTS WD4 8LR, UK TEL: +44 (0) 1923 295200 WWW.RES-GROUP.COM				