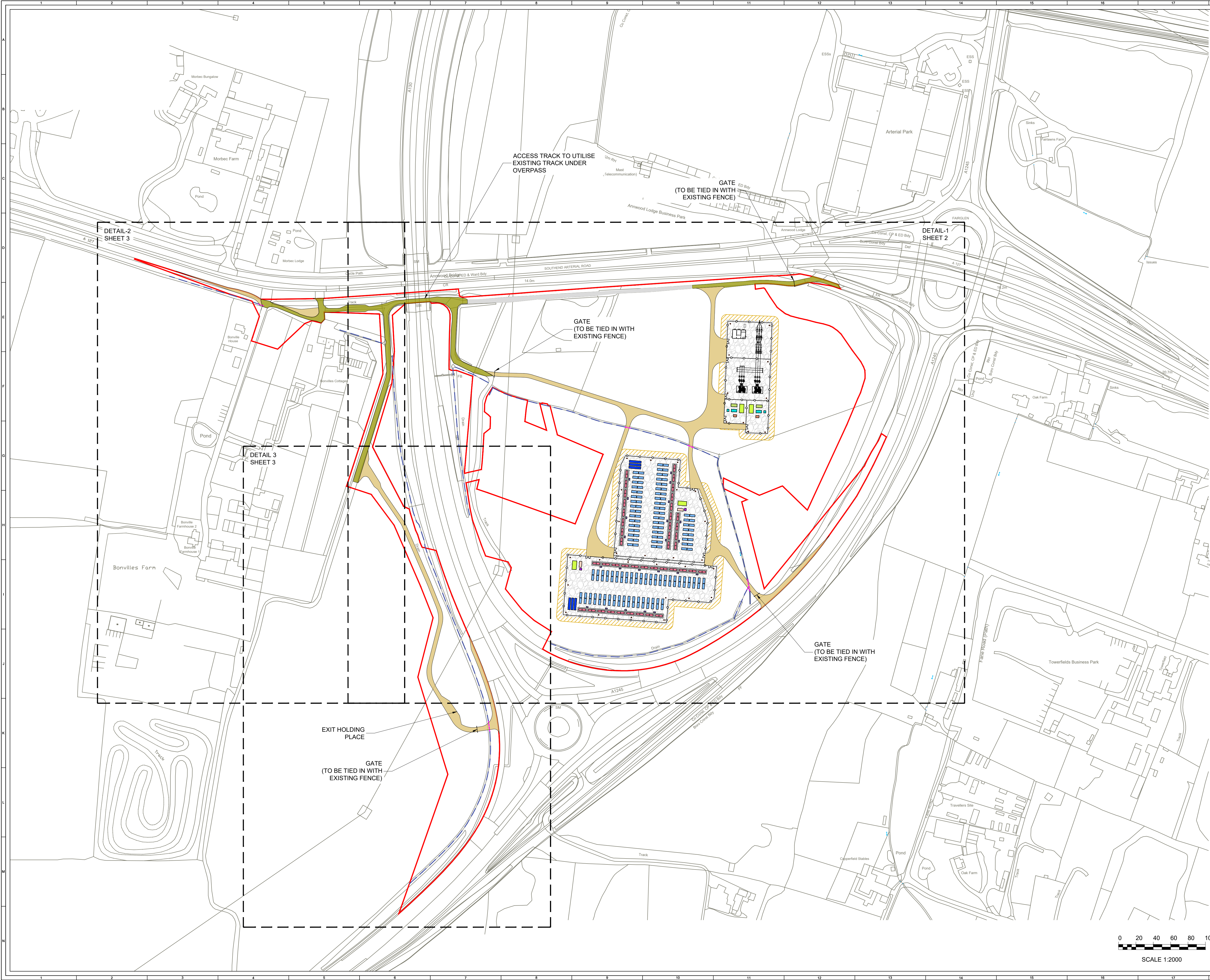




## **Appendix B1: Site Masterplan**



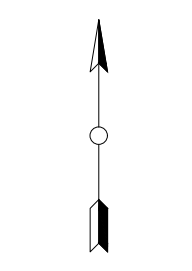


© CROWN COPYRIGHT. ALL RIGHTS RESERVED.  
2025 LICENCE NUMBER AC000808122.

- KEY:
- DEVELOPMENT BOUNDARY (OUTSIDE OF LINE DENOTES BOUNDARY)
  - PALISADE, WELDMESH OR ACOUSTIC FENCE
  - BATTERY STORAGE ENCLOSURE (BSE)
  - POWER CONVERSION SYSTEM (PCS) WITH SINGLE MV SKID AND APRON SLAB
  - BESS SUBSTATION BUILDING
  - AUXILIARY TRANSFORMER
  - LV SWITCHGEAR ROOM
  - AGGREGATION PANEL WITH LV PILLAR
  - PRE-INSERTION RESISTOR
  - CAPACITOR BANK
  - HARMONIC FILTER AND RESISTOR
  - SPARES CONTAINER
  - LIGHTING / CCTV COLUMN
  - ACCESS TRACK
  - EXISTING ACCESS TRACK
  - EXISTING ACCESS TRACK TO BE UPGRADED
  - ALLOWANCE FOR EARTHWORKS (6m)
  - GRAVEL OR ASPHALT FINISH TO SUIT DETAILED EARTHING DESIGN
  - EXISTING DRAINAGE INFRASTRUCTURE
  - WATER CHANNEL CROSSING CULVERT

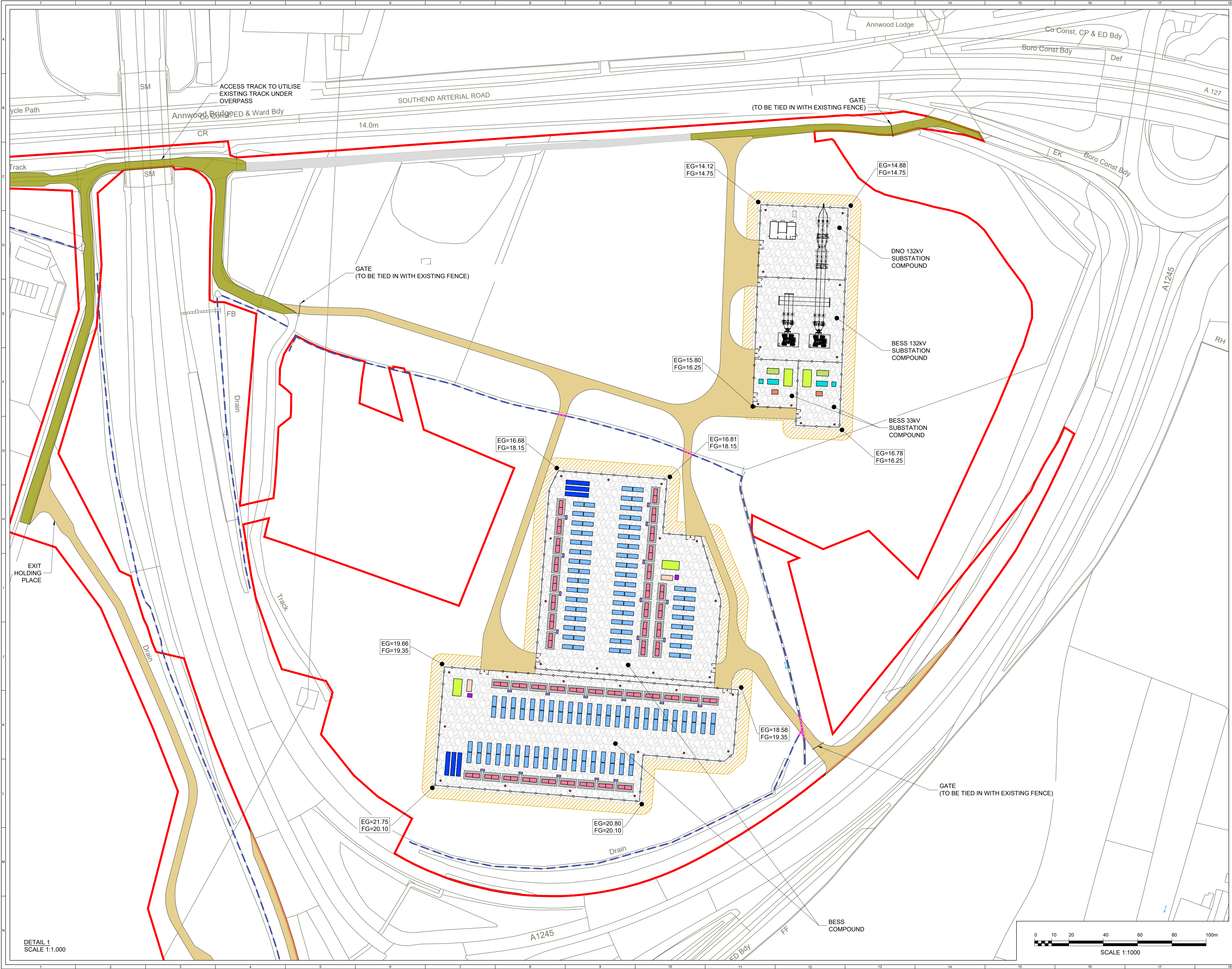
- NOTES:
- EQUIPMENT DETAILS AND CONFIGURATION WITHIN THE BATTERY ENERGY STORAGE COMPOUND ARE INDICATIVE AND SUBJECT TO DETAILED DESIGN.

OVERALL  
SHEET 1 OF 3



3	BM	WM	JH	2025-06-11	UPDATED DEVELOPMENT BOUNDARY AND ACCESS TRACK		
2	BM	WM	JH	2025-06-08	DESIGN EVOLUTION		
1	BM	MC	JH	2025-04-15	FIRST ISSUE		
ISSUE				CHKD	APPD	DATE	REVISION NOTES
PURPOSE				COORDINATES			
PLANNING				OSGB 1936			
SCALE				1:2,000 @ A1		DATUM	
LAYOUT DWG				N/A		T-LAYOUT NO.	
LAYOUT DWG				N/A		N/A	
PROJECT TITLE				FAIRGREEN STORAGE			
DRAWING TITLE				INFRASTRUCTURE LAYOUT			
RES DRAWING NUMBER				05560-RES-LAY-DR-PT-001			
REV				3			
THIS DRAWING IS THE PROPERTY OF RENEWABLE ENERGY SYSTEMS LIMITED AND NO REPRODUCTION MAY BE MADE IN WHOLE OR IN PART WITHOUT PERMISSION							
				BEAUFORT COURT, EGG FARM LANE, KINGS LANGLEY, HERTS WD4 8LR, UK TEL: +44 (0) 1923 296200 WWW.RES-GROUP.COM			





© CROWN COPYRIGHT. ALL RIGHTS RESERVED.  
2025 LICENCE NUMBER AC000808122.

KEY:

- DEVELOPMENT BOUNDARY (OUTSIDE OF LINE DENOTES BOUNDARY)
- PALISADE, WELDMESH OR ACOUSTIC FENCE
- BATTERY STORAGE ENCLOSURE (BSE)
- POWER CONVERSION SYSTEM (PCS) WITH SINGLE MV SKID AND APRON SLAB
- BESS SUBSTATION BUILDING
- AUXILIARY TRANSFORMER
- LV SWITCHGEAR ROOM
- AGGREGATION PANEL WITH LV PILLAR
- PRE-INSERTION RESISTOR
- CAPACITOR BANK
- HARMONIC FILTER AND RESISTOR
- SPARES CONTAINER
- LIGHTING / CCTV COLUMN
- ACCESS TRACK
- EXISTING ACCESS TRACK
- EXISTING ACCESS TRACK TO BE UPGRADED
- ALLOWANCE FOR EARTHWORKS (6m)
- GRAVEL OR ASPHALT FINISH TO SUIT DETAILED EARTHING DESIGN
- EXISTING DRAINAGE INFRASTRUCTURE
- WATER CHANNEL CROSSING CULVERT

NOTES:

- EQUIPMENT DETAILS AND CONFIGURATION WITHIN THE BATTERY ENERGY STORAGE COMPOUND ARE INDICATIVE AND SUBJECT TO DETAILED DESIGN.

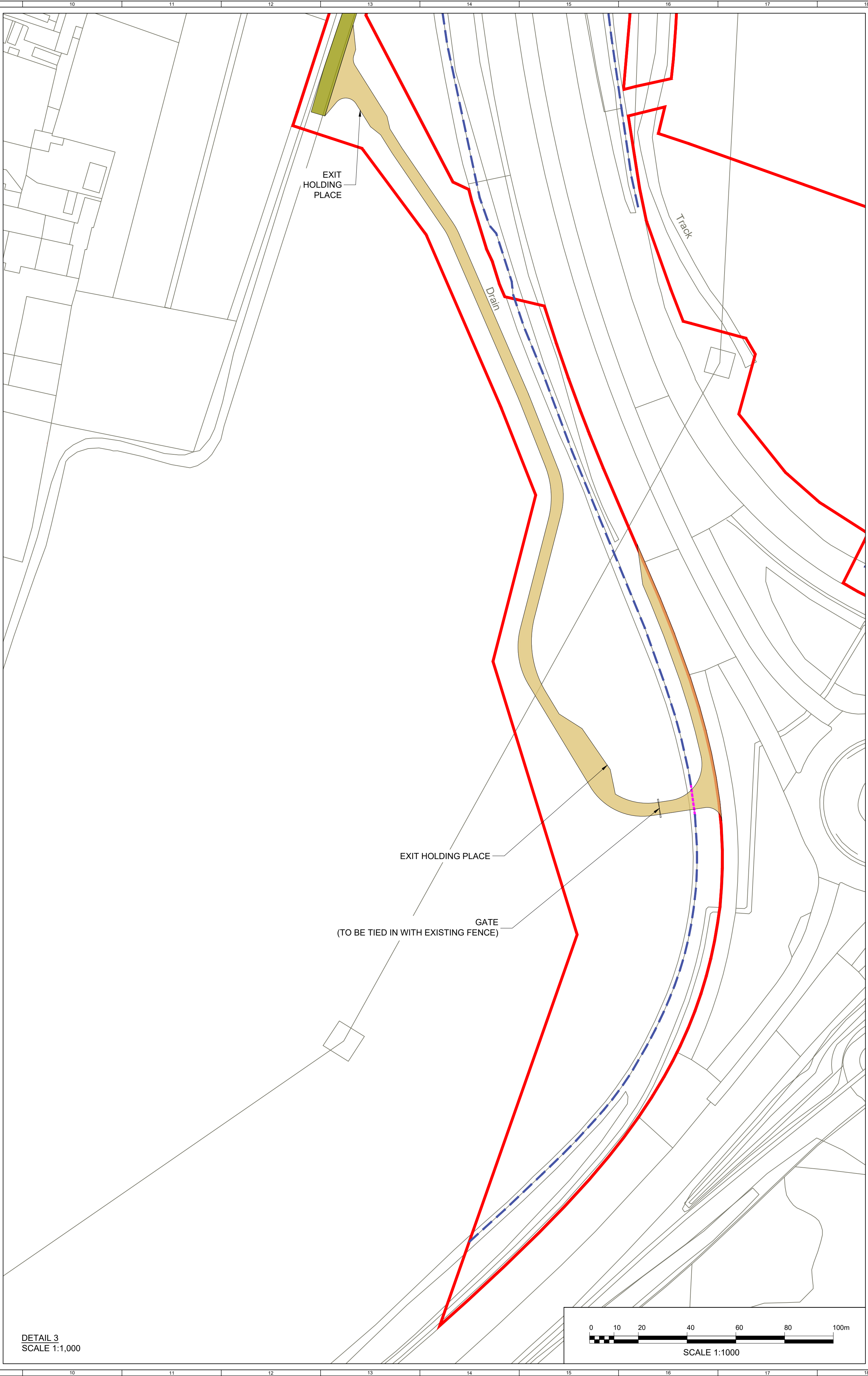
DETAIL 2  
SHEET 2 OF 3

3	BM	WM	JH	2025-06-11	UPDATED DEVELOPMENT BOUNDARY AND ACCESS TRACK
2	BM	WM	JH	2025-06-08	DESIGN EVOLUTION
1	BM	MC	JH	2025-04-15	FIRST ISSUE
ISSUE	DRAWN	CHKD	APPD	DATE	REVISION NOTES
PURPOSE					COORDINATES
PLANNING				OSGB 1936	
SCALE		1:1,000 @ A1		DATUM N/A	
LAYOUT DWG		N/A		T-LAYOUT NO. N/A	
PROJECT TITLE FAIRGREEN STORAGE					
DRAWING TITLE INFRASTRUCTURE LAYOUT					
RES DRAWING NUMBER 05560-RES-LAY-DR-PT-001					REV 3
<small>THIS DRAWING IS THE PROPERTY OF RENEWABLE ENERGY SYSTEMS LIMITED AND NO REPRODUCTION MAY BE MADE IN WHOLE OR IN PART WITHOUT PERMISSION</small>					

SCALE 1:1000

BEAUFORT COURT,  
EGG FARM LANE,  
KINGS LANGLEY,  
HERTS WD4 8LR, UK  
TEL: +44 (0) 1923 290200  
WWW.RES-GROUP.COM



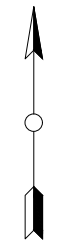



© CROWN COPYRIGHT. ALL RIGHTS RESERVED.  
2025 LICENCE NUMBER AC000808122.

- KEY:
- DEVELOPMENT BOUNDARY (OUTSIDE OF LINE DENOTES BOUNDARY)
  - PALISADE, WELDMESH OR ACOUSTIC FENCE
  - BATTERY STORAGE ENCLOSURE (BSE)
  - POWER CONVERSION SYSTEM (PCS) WITH SINGLE MV SKID AND APRON SLAB
  - BESS SUBSTATION BUILDING
  - AUXILIARY TRANSFORMER
  - LV SWITCHGEAR ROOM
  - AGGREGATION PANEL WITH LV PILLAR
  - PRE-INSERTION RESISTOR
  - CAPACITOR BANK
  - HARMONIC FILTER AND RESISTOR
  - SPARES CONTAINER
  - LIGHTING / CCTV COLUMN
  - ACCESS TRACK
  - EXISTING ACCESS TRACK
  - EXISTING ACCESS TRACK TO BE UPGRADED
  - ALLOWANCE FOR EARTHWORKS (6m)
  - GRAVEL OR ASPHALT FINISH TO SUIT DETAILED EARTHING DESIGN
  - EXISTING DRAINAGE INFRASTRUCTURE
  - WATER CHANNEL CROSSING CULVERT

- NOTES:
- EQUIPMENT DETAILS AND CONFIGURATION WITHIN THE BATTERY ENERGY STORAGE COMPOUND ARE INDICATIVE AND SUBJECT TO DETAILED DESIGN.

DETAIL 2 & 3  
SHEET 3 OF 3



3	BM	WM	JH	2025-06-11	UPDATED DEVELOPMENT BOUNDARY AND ACCESS TRACK
2	BM	WM	JH	2025-06-08	DESIGN EVOLUTION
1	BM	MC	JH	2025-04-15	FIRST ISSUE
ISSUE				DATE	REVISION NOTES
PURPOSE				DATE	COORDINATES
PLANNING					OSGB 1936
SCALE				DATUM	N/A
1:1,000 @ A1					
LAYOUT DWG				T-LAYOUT NO.	N/A
N/A					
PROJECT TITLE					
FAIRGREEN STORAGE					
DRAWING TITLE					
INFRASTRUCTURE LAYOUT					
RES DRAWING NUMBER					REV
05560-RES-LAY-DR-PT-001					3
THIS DRAWING IS THE PROPERTY OF RENEWABLE ENERGY SYSTEMS LIMITED AND NO REPRODUCTION MAY BE MADE IN WHOLE OR IN PART WITHOUT PERMISSION					
					
BEAUFORT COURT, EGG FARM LANE, KINGS LANGLEY, HERTS WD4 8LR, UK TEL: +44 (0) 1923 295200 WWW.RES-GROUP.COM					